



- No use of sealant to fix the prisms in the dome thanks to customized gaskets, making their replacement quick and easy
- No optical adjustment after LED module or prism replacement
- Valve for watertightness test after overhaul
- Operating with any topology of CCRs designed in compliance with IEC or FAA requirements

** For monitored fixtures, isolation transformer max size: 200VA*

▶ PERFORMANCES

- The electronic is strong-built and highly resistant to shock and vibration
- Automatic adaptation to the frequency of the supply current
- A surge protection device is provided in the electronics as required by the FAA "Engineering Briefing No.67"
- Immediate detection of an internal fault
- 6.35 mm protrusion strongly reduces vibrations to aircrafts and to light itself, increasing its lifetime
- Dome smooth outer profile makes the light less sensitive to snowplough blades
- Omnidirectional, 8" dia.
- Drop-forged dome and cast aluminium lower cover make the fitting sturdy, but lightweight too for ease handling in the field
- Light output practically not affected by heavy rainfall thanks to the shallow channel in front of the prism windows
- O-Ring placed outside the dome to avoid dirt deposits between light and base
- Protection degree: IP68
- Temperature range: -45°C to +55°C

▶ COMPLIANCES

ICAO	Annex 14 - Volume I par. 5.3.18.8
EASA	CS ADR-DSM, Book 1, par.M.720 (c) (3)
FAA	L-852T(L) AC150/5345-46 and EB No.67
IEC	TS 61827
NATO	STANAG 3316
CAA	CAP 168
TCCA	TP312

▶ BENEFITS

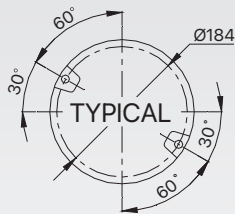
- 60000 hours LED rated life at full intensity, but over 100000 hours in field operating conditions
- In new installation, LED lights mean lower loads, lower size of CCRs and transformers, thus low life cycle costs
- The light output is variable like a traditional halogen lamp, as indicated by the FAA "Engineering Briefing No.67"
- Colour emitted directly by LEDs : absence of coloured filters ensures no energy losses and no colour shifts
- Fully compatible with existing AFL infrastructure*
- Designed with simplicity allowing longer maintenance intervals and fewer spare parts

▶ APPLICATIONS

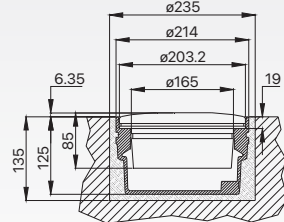
Taxiway edge for ICAO, FAA and military taxiways

▶ INSTALLATION

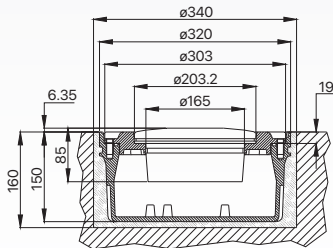
- Suitable for 8" or 12" dia. bases
- Adaptor ring for 8" light installation on 12" dia. bases
- Specific tools available for easy and precise installation



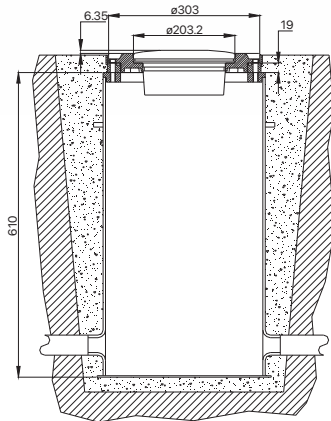
Light Fixture 8" dia.



Shallow Base 8" dia.



Shallow Base 12" dia.

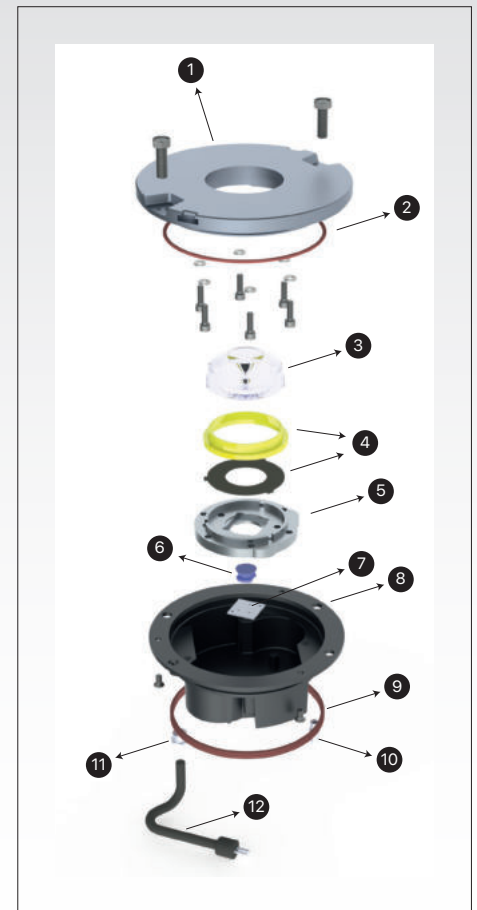


L-868 Deep Base 12" dia.

MAIN COMPONENTS OF THE LIGHT UNIT

- 1 : Dome (Upper Cover)
- 2 : O-Ring for dome
- 3 : Prism
- 4 : Prism Gasket
- 5 : LED holder
- 6 : Optical Lens
- 7 : LED Module
- 8 : Lower cover with electronic
- 9 : Lower cover gasket
- 10 : Valve for Watertightness Test
- 11 : Gland
- 12 : Plug

** Refer to the relevant technical manual for the complete list of the available spare parts*



POWER FACTOR

Input Step	2.8A	6.6A
Power Factor	0.96	0.98

POWER CONSUMPTION

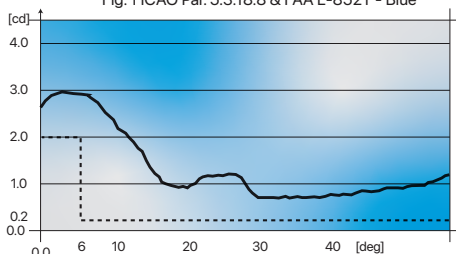
Electrical System	1 Plug
Omnidirectional 8" - 12" (w/o Arctic Kit)	8 VA
Omnidirectional 8" (with Arctic Kit)	28 VA

SHIPPING WEIGHTS & VOLUMES

	Light Unit	Shallow Base	Light Unit & Adaptor Ring
Weight(kg)	3.0	3.2	6.15
Volume(m³)	0.007	0.007	0.013

PHOMETRIC PERFORMANCE

Fig.1 ICAO Par. 5.3.18.8 & FAA L-852T - Blue



LITE - I - O - M - A

Basic P/N

Compliance
I = ICAO - IEC

Mounting Assembly
O = No Mounting Assembly
R = Adaptor Ring 8" - 12" dia.

Arctic Kit
O = Without Arctic Kit
A = With Arctic Kit

Monitoring
O = Without Monitoring
M = With Monitoring

No.1, Mahdi Alley, Haji Pour Amir St., Sazman Aab Ave.

Sheikh Fazlollah Nouri Highway, Tehran, IRAN

Web www.tmb-co.com Tel 98 21 87740

Fax 98 21 8826 0707 P.O Box 1454643685