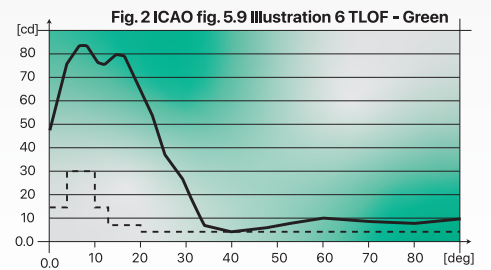
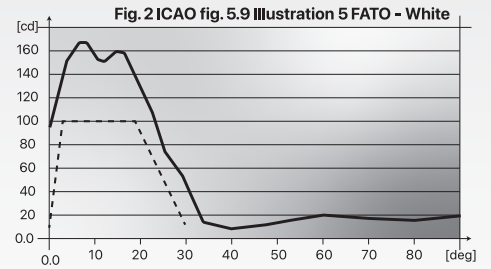




► **INSTALLATION**

- The fixture can be installed on pipe elbow or baseplate
- Specific tools available for easy and precise installation

► **Photometric Performances**



► **COMPLIANCES**

- IEC** Annex 14 - Volume II
- ICAO** TS 61827
- NATO** STANAG 3619

► **APPLICATIONS**

ICAO helipad surfaces

► **BENEFITS**

- 60000 hours LED rated life at full intensity, but over 100000 hours in field operating conditions
- Colour emitted directly by LEDs: absence of coloured lenses ensures no energy losses and no colour shifts
- Designed with simplicity allowing longer maintenance intervals and fewer spare parts
- Customized lens gasket to avoid the use of sealing
- No optical adjustment after LED module or lens replacement

► **PERFORMANCES**

- The electronic is strong-built and highly resistant to shock and vibration
- Lightweight and sturdy due to aluminium die-castings
- Powder coating surface finishing to provide good corrosion resistance
- Body balanced on the slipfitter for proper levelling by means of three screws
- High jet blast resistance due to the small size of the fixture, 250 mm high
- Protection degree: IP67
- Temperature range: -45°C to +55°C

POWER CONSUMPTION

Electrical System	1Plug
Parallel Circuit (220 V)	5 VA
Series Circuit (6.6 A)	7 VA

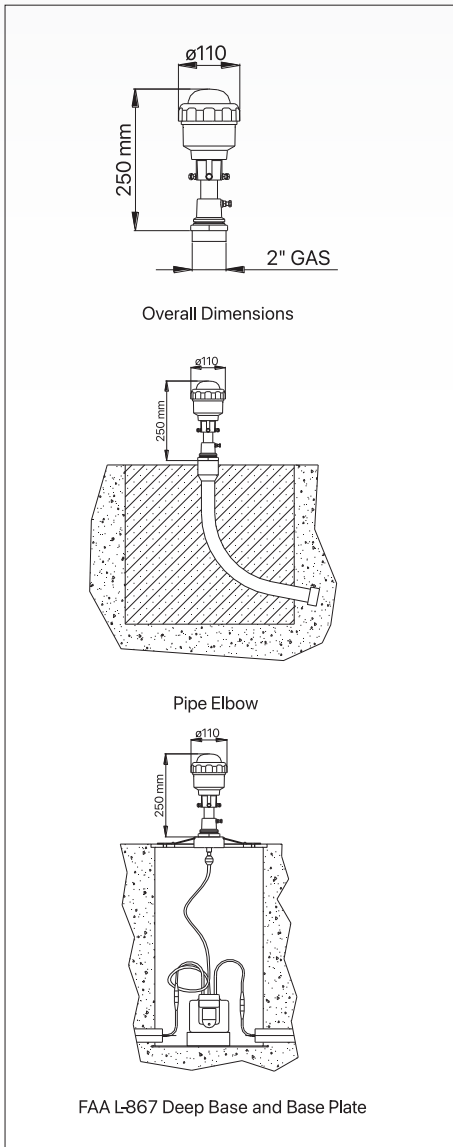
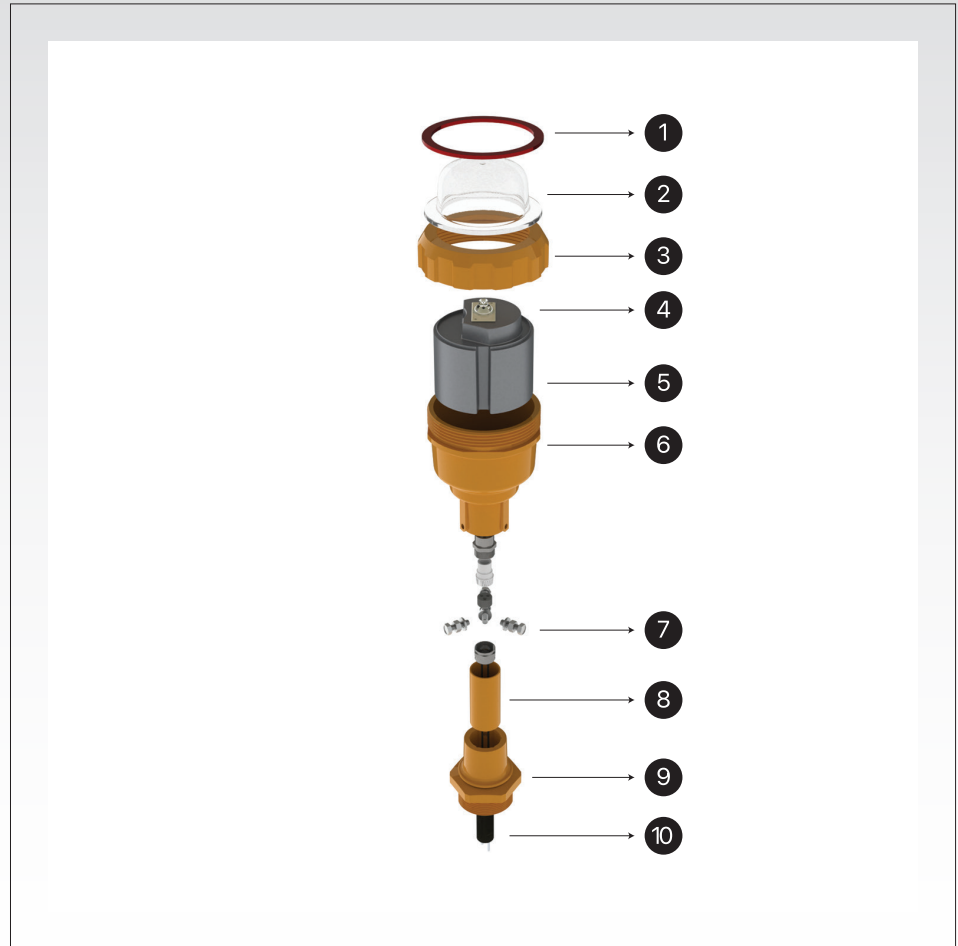
Shipping Weights and Volumes

	Light Unit
Weight (kg)	1.3
Volume (m3)	0.005

► **RENEWAL PARTS FOR LIGHT UNIT**

- 1 : Gasket for lens
- 2 : Lens
- 3 : Lens locking ring
- 4 : LED module with accessories
- 5 : Electronic
- 6 : Body with slipfitter
- 7 : Cable gland
- 8 : Standard -1inch tube
- 9 : Breakable coupling
- 10 : Secondary connector plug

**Refer to the relevant technical manual for the complete list of the available spare parts*



COLOR SELECTION

Specs	Use	Color		
		White	Green	Yellow
ICAO	FATO and Aiming Point	X		
ICAO	TLOF Heliport Edge		X	
STANAG	TLOF Heliport Edge			X
STANAG	Landing Direction			X
STANAG	Approach	X		

LHE G 25 AC

LED
(Elevated Helipad Light)

COLOR
W (White) - G (Green) - Y (Yellow)

Supply
AC (220V AC) - CC (6.6A CCR)

HEIGHT
00 (Without Pole) - 25 (25 cm)